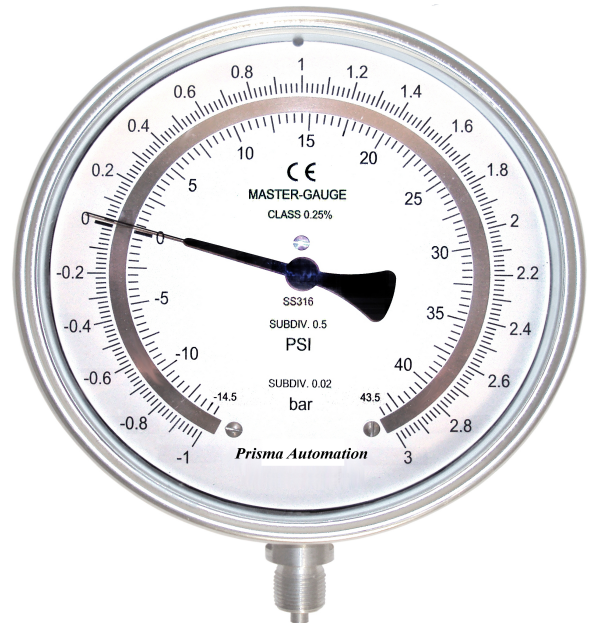


Master Pressure Gauges

MODEL : MPG

Features

- Accuracy class $\pm 0.25\%$
- Rugged construction
- 1.2 fold overrange capability
- Traceability to national/international standard / laboratory



Specifications

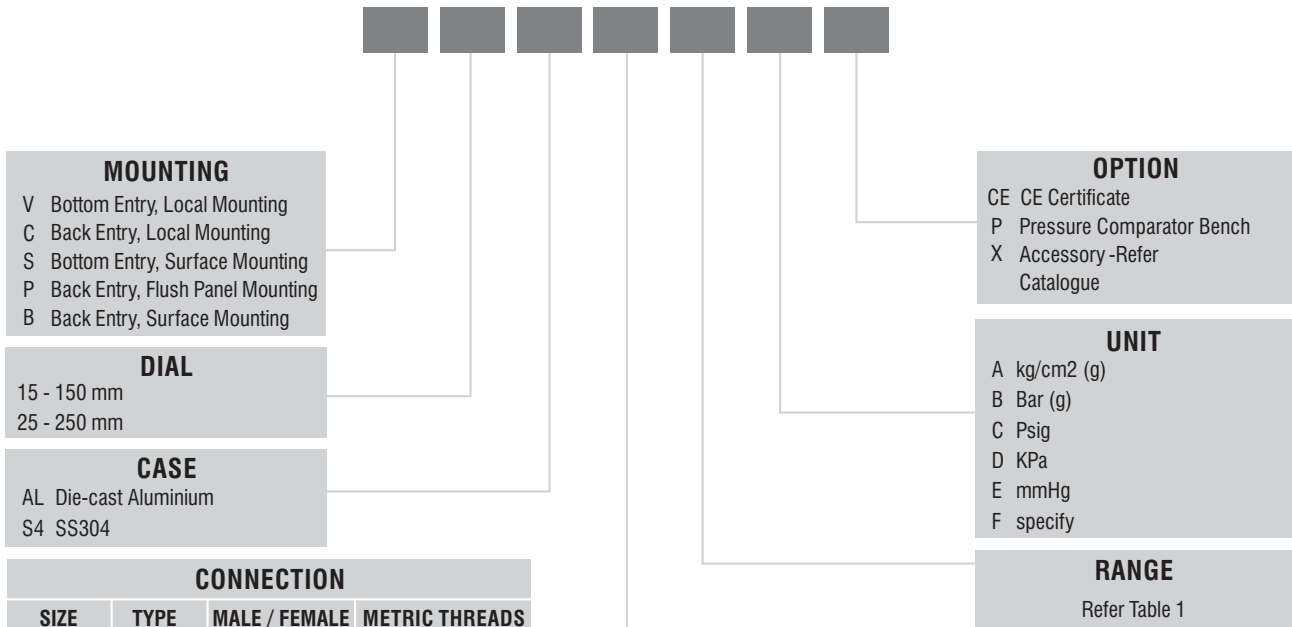
Ref. Standard	EN 837
Normal size	150 mm / 250 mm
Case	Diecast aluminium / SS304
Bezel	Aluminium / SS304
Dial	Anti parallax mirror type, white, with black markings.
Window	Instrument glass
Pointer	Balanced knife edge
Measuring element	Bourdon in SS316 Ti
Movement	Precision brass, jewel bearings
Connection	1/2" NPT (M), bottom or back eccentric in brass or SS316
Range	760 mm Hg Vac upto 600 bar g (Refer table -1 of Bourdon Sensing Pressure Gauge)
Scale	Bar (g), kg/cm2g, Psig (dual scale)
Accuracy	$\pm 0.25\%$
Overrange	1.2 times maximum rating for short duration
Suitability	Media up to 50°C ambient (-) 25°C to 60°C
Weight	1.5 kg / 2.5 kg (approx.)
Option	Pressure comparator bench can be supplied. Pressure comparator bench consists of pressure raising by screw press, reservoir for filling the system. The pressure is released to atmosphere by opening valve between reservoir and the system after screw press has been reversed to lower pressure. It has maintenance free operation.

Table 1

Range	least Count	
	Bar, kg/cm2	NG 150 NG250
(-)1 to 0	0.005	0.005
(-)1 to 0.6	0.01	0.005
(-)1 to 1.5	0.02	0.01
(-)1 to 3	0.02	0.02
(-) 1 to 5	0.05	0.02
(-)1 to 9	0.05	0.05
(-)1 to 15	0.1	0.05
(-)1 to 24	0.2	0.1
(-)1 to 39	0.2	0.2
0 to 1	0.005	0.005
0 to 1.6	0.01	0.005
0 to 2.5	0.02	0.01
0 to 4	0.02	0.02
0 to 6	0.05	0.02
0 to 10	0.05	0.05
0 to 16	0.1	0.05
0 to 25	0.2	0.1
0 to 40	0.2	0.2
0 to 60	0.5	0.2
0 to 100	0.5	0.5
0 to 160	1.0	0.5
0 to 250	2.0	1.0
0 to 400	2.0	2.0
0 to 600	5.0	2.0

Ordering Information

MODEL : MPG



CONNECTION			
SIZE	TYPE	MALE / FEMALE	METRIC THREADS
6 1/4"	NT NPT	M Male	18 M - M 18 x 1.5
10 3/8"	BP BSP	F Female	20 M - M 20 x 1.5
15 1/2"	BT BSPT		24 M - M 24 x 1.5
20 3/4"	PF PF		27 M - M 27 x 2
25 1"	GS Gas		33 M - M 33 x 2
32 1.1/4"	NS NPSM		XX - Any other
40 1.1/2"			

TABLEAU 1

Bar - kg/cm	Graduation	
	150 mm	250 mm
- 1 à 0	0,005	0,005
-1 à 0,6	0,01	0,005
-1 à 1,5	0,02	0,01
-1 à 3	0,02	0,02
-1 à 5	0,05	0,02
-1 à 9	0,05	0,05
-1 à 15	0,1	0,05
-1 à 24	0,2	0,1
-1 à 39	0,2	0,2
0 à 1	0,005	0,005
0 à 1,6	0,01	0,005
0 à 2,5	0,02	0,01
0 à 4	0,02	0,02
0 à 6	0,05	0,02
0 à 10	0,05	0,05
0 à 16	0,1	0,05
0 à 25	0,2	0,1
0 à 40	0,2	0,2
0 à 60	0,5	0,2
0 à 100	0,5	0,5
0 à 160	1	0,5
0 à 250	2	1
0 à 400	2	2
0 à 600	5	2

The recommendations made in this catalogue are to be used as intended guide. No guarantee of material can be undertaken since other factors may affect the performance. We reserve the right to change the specifications mentioned in this catalogue without any notice as improvements & development is a continuous process. Responsibility of typographical errors is specifically disclaimed.